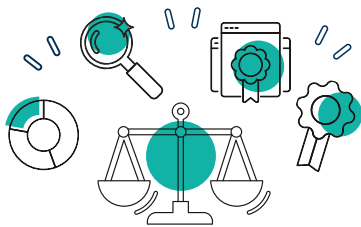


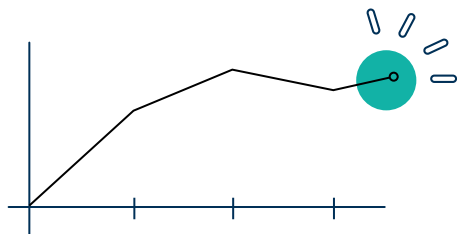
Understanding grade boundaries 2024 - UK qualifications

With the two-year transition to pre-pandemic grading now complete, normal grading arrangements will continue for GCSE, AS and A level qualifications for 2024. Overall outcomes are therefore broadly in line with those of 2023, though grade boundaries at subject level may vary, as in any other year, to reflect any difference in both the demand of the question papers and the ability of the cohort.

All exam boards have used data from 2023 as a starting point for grading. Using data is important to support alignment between exam boards, so that it is no easier to get a grade with one exam board than another.



Senior examiners have then reviewed the quality of student work over a range of marks and recommended grade boundaries based on all the available evidence.



The grade boundaries proposed by senior examiners may vary each year. We know that some variations in the level of demand of assessment are inevitable, particularly as we continually review the performance of our assessments to improve accessibility.

Such improvements are aimed at enabling students to access questions appropriately, enhance their experience and build confidence. Equally, the ability of the cohort will vary from series to series and grade boundaries may be different to secure fair and appropriate grading standards. This ensures that it is not easier or harder to get a grade between one year and the next.

Helpful links

For further information on the approach to summer 2024 grading, please take a look at the information provided by Ofqual below.

- [Guide for Schools and Colleges 2024](#)
- [Approach to Grading](#)
- [GCSE 9–1 grades to uni places: What you need to know about 2024 exam results](#)
- [Student Guide 2024](#)
- [A letter to students from Ofqual and UCAS](#)